

USB Plotter Setup: Installing a Generic / Text only Printer

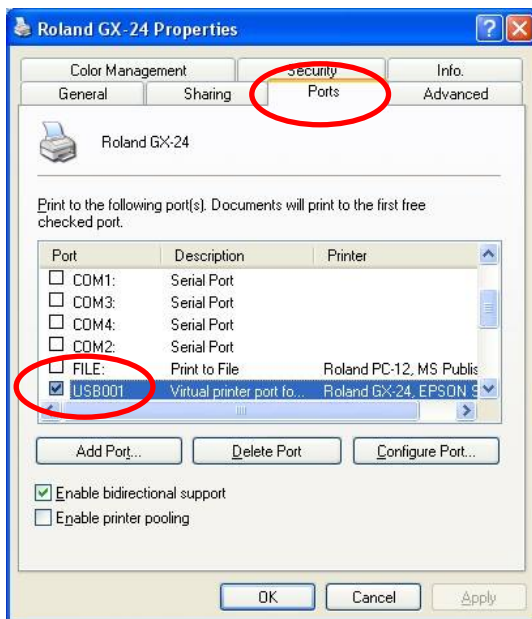
Setting up VinylMaster Pro to cut to a plotter using the USB port.

This step by step guide will show you the steps required to set up a plotter on the USB port.

Before you can set VinylMaster Pro to use the USB port, you must first install the Printer Driver that came with the plotter.



1. Go to the Windows "Printers and Faxes" folder (via the Start button), and right click on the Printer Driver, and select "Properties"

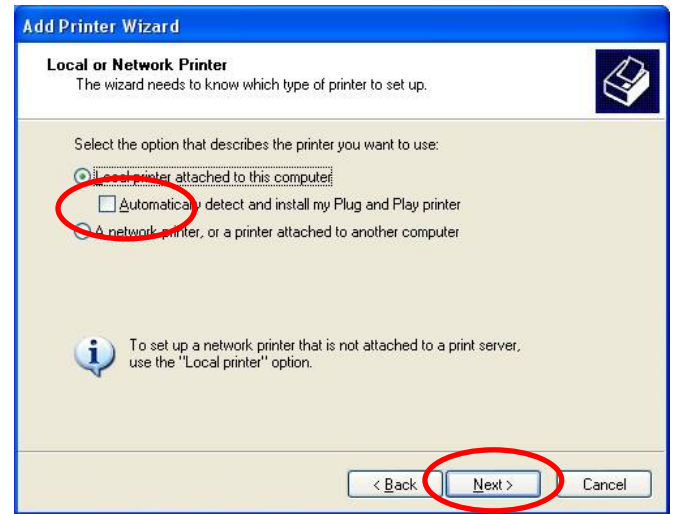


2. Go to the "Ports" tab, and check what USB port the printer driver is using (it will usually be USB01 or USB02).

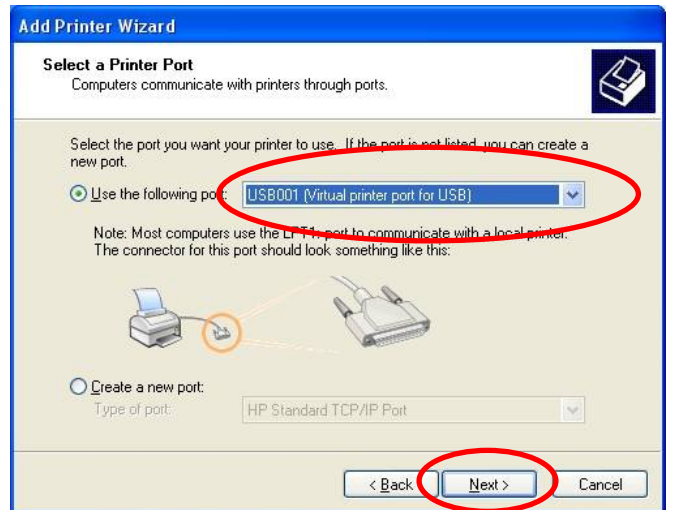
Note: if you can not read the name of the port, you can expand the Port column using the mouse.



3. Double click on the "Add Printer" icon to install a "Generic Textonly" printer, and when the wizard appears, click "Next".

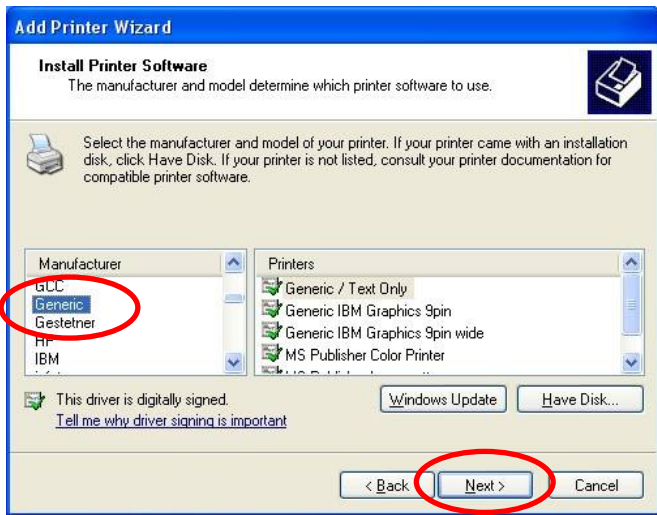


4. Turn "Automatically detect and install my Plug and Play printer" off (Unchecked), then click "Next".

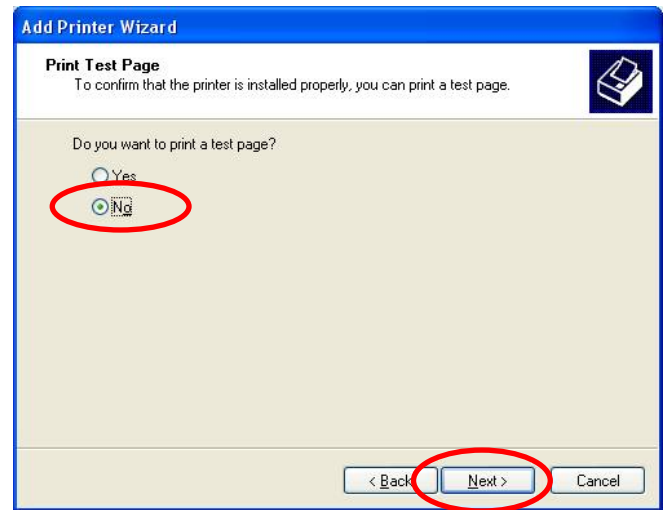


5. Select the correct USB port, and click "Next".

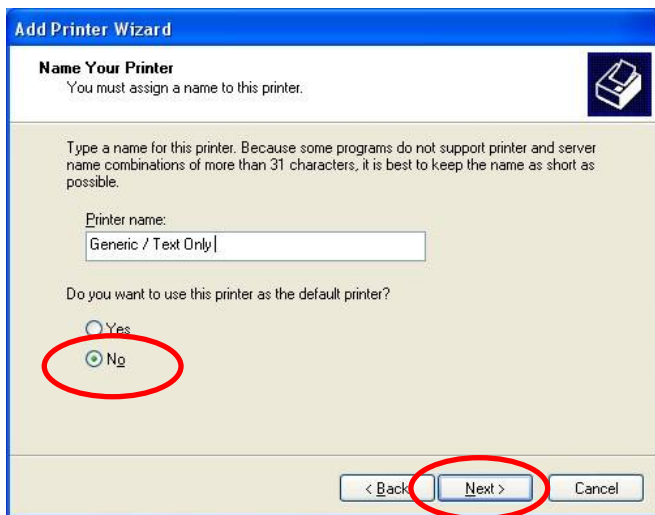
USB Plotter Setup: Installing a Generic / Text only Printer - cont.



6. Select **“Generic”** as the manufacturer, then click **“Next”**.



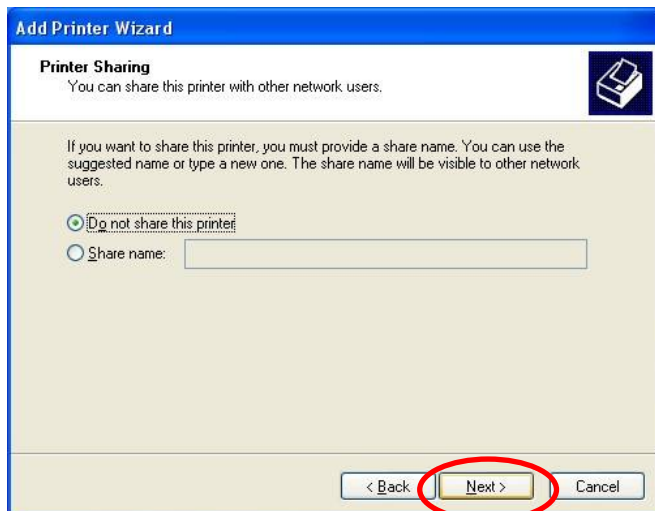
9. Select **“No”** if asked if you want to print a test page, then **“Next”**.



7. Leave the printer name as **“Generic / Text Only”** and press **“Next”**.



10. Click **“Finish”** to install the Generic Textonly printer.



8. Click **“Next”** to continue.

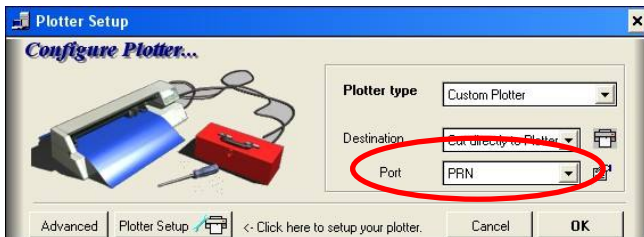
USB Plotter Setup: Selecting the Generic Text only Printer in VMP.



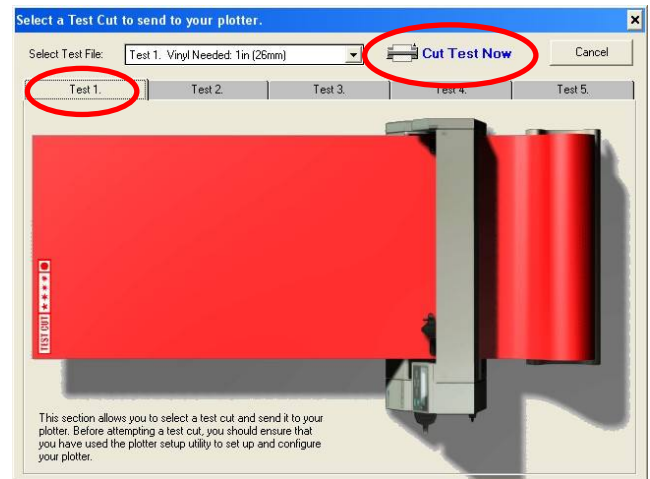
1. Open the Vinyl Spooler, and click on the Blue plotter.



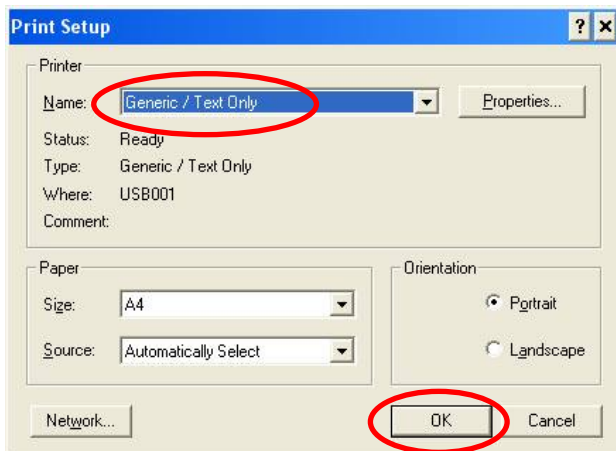
1. In the Vinyl spooler , click on the “Test cut” button.



2. Select “Prn” in the Port list (even if it is already set to prn).



2. Select one of the preset test cuts, then click “Cut Test Now” (make sure the plotter is loaded and initialized first).



The cutter should cut out the selected test file. If it does not work firstly make sure that when you click on Prn in the Port List, the Generic text only printer is selected, and if that does not work, try going into the Printers folder, and changing the USB port of the Generic TextOnly printer.

3. Select the “Generic Text Only” printer and press “OK”. VinylMaster Pro should now work with the cutter. You can perform a quick test by following the instructions in the next section.